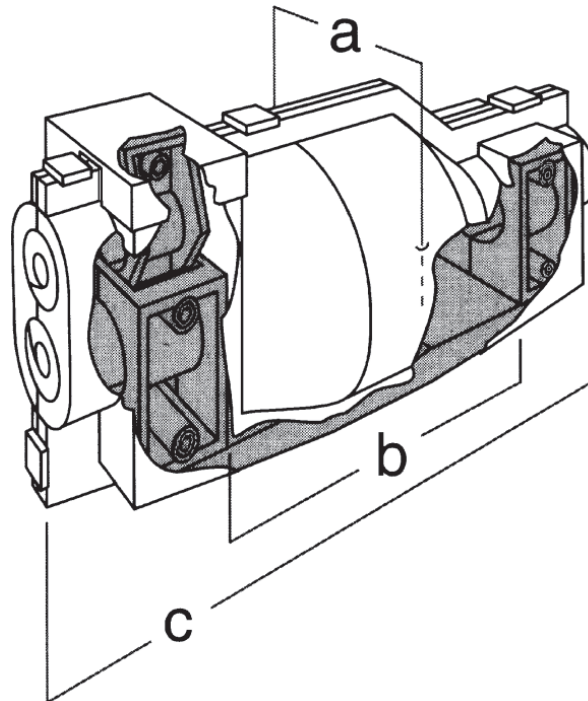


# 1 kV Branch and Straight Joint HSM



resin technique



HSM 290/85



Main Cable according to DIN/TGL			Branch Cable according to DIN/TGL		
Type	Cross Section (mm <sup>2</sup> )	max. Diameter	Type	Cross Section (mm <sup>2</sup> )	max. Diameter
N(A)YY, N(A)Y2Y NA2XY, NA2X2Y	4 x 6 to 4 x 16	25 mm	N(A)YY, N(A)Y2Y NA2XY, NA2X2Y	4 x 6 to 4 x 16	25 mm

Joint Box Type	Dimensions (mm)			Joint Box Volume	Resin Net Weight	Gross Weight (packed set)
	a=Ø	b	c			
HSM 290/85	85	160	290	1230 cm <sup>3</sup>	1,280 kg	2,2 kg

## Handling

With the patented cable clamp construction the branch cable is fixed and a fast and operator-safe assembly of the joint box is ensured.

## Application

The joint box is suitable for use with single clamps.

## Quality

The joint box is system-tested according to VDE 0278 part of 1 and 3 respectively hp 623. Our cast resins fulfill the requirements of VDE 0291 part of 2 respectively hp 631.1.

By application of the quality management system in accordance with DIN EN ISO 9001:2000 the quality of our products is guaranteed.

## Specification

- two-part, transparent shell
- cable fixing clamps and assembly frame
- PUR and hardener in tins or alternatively in double-chamber bags
- sealings
- stirring spatula (for tins)
- emery cloth
- protection gloves
- installation instructions