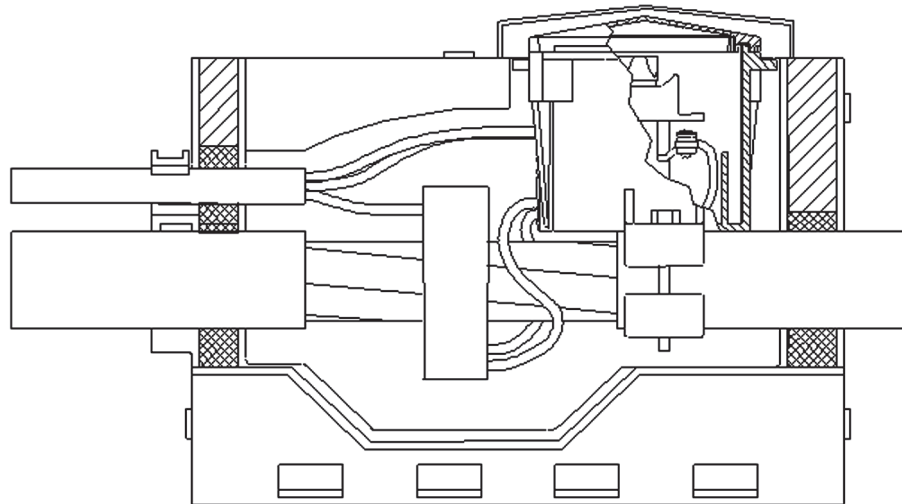


1 kV Branch Joint with Fuse BMP



resin technique

BMP 340/150



Main Cable according to DIN/TGL			Branch Cable according to DIN/TGL		
Type	Cross Section (mm ²)	max. Diameter	Type	Cross Section (mm ²)	max. Diameter
N(A)YY, N(A)Y2Y, NA2XY, NA2X2Y	to 4 x 95 to 4 x 240	58 mm	N(A)YY, N(A)Y2Y, NA2XY, NA2X2Y	4/5 x 4 to 4/5 x 16	26 mm

Joint Box Type	Dimensions (mm)			Resin Net Weight	Gross Weight (packed set)
	a= Ø	b	c		
BMP 340/150	150	280	350	4,4 kg	5,8 kg

Handling

By few and simple mounting steps a fast and operator-safe assembly of the joint box is ensured.

The pre-mounted fuse-box allows the installation without switching off the main cable voltage.

The fuses are accessible from the outside.

Application

The joint box is suitable for use with all available cable ring connectors.

Quality

The joint box is system-tested according to VDE 0278 part of 1 and 3 respectively hp 623. Our cast resins fulfill the requirements of VDE 0291 part of 2 respectively hp 631.1.

By application of the quality management system in accordance with DIN EN ISO 9001:2000 the quality of our products is guaranteed.

Specification

- two-part shell
- Fuse box, incl. fuses
- PUR and hardener in tins or alternatively in double-chamber bags
- sealings
- stirring spatula (for tins)
- emery cloth
- protection gloves
- installation instructions