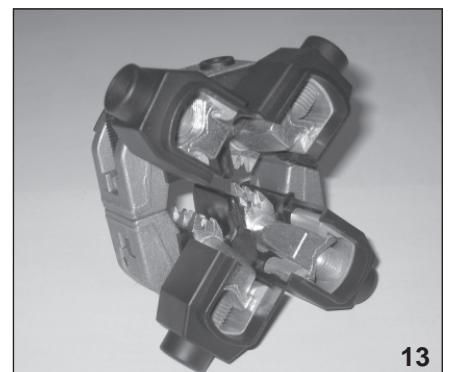
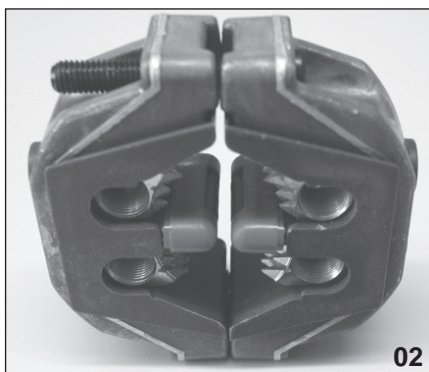


# Cable Ring Connectors AkR



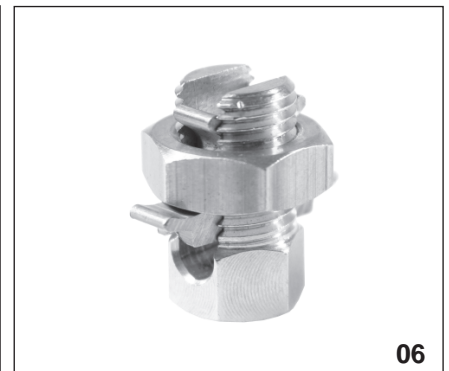
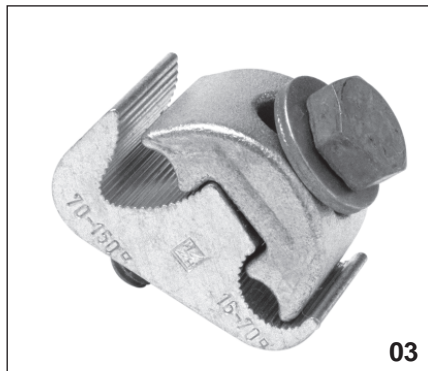
Type	Main Conductor				Tap Conductor
	re	rm	se	sm	
AkR 01	4 x 35	4 x 35 - 50	4 x 50 - 70	4 x 35 - 50	6 - 50
AkR 02			4 x 95 - 150	4 x 70 - 120	6 - 70
AkR 03			4 x 95 - 150	4 x 95 - 120 Cu	6 - 120 / 150se
AkR 04			4 x 150	4 x 120 Cu	6 - 50
AkR 05			4 x 185 - 240	4 x 185 - 240	6 - 70
AkR 06	4 x 16 - 35	4 x 25 - 35	4 x 50	4 x 25 - 35	6 - 50
AkR 07	4 x 35	4 x 25 - 35	4 x 50 - 70	4 x 25 - 50	6 - 50
AkR 08			4 x 70 - 150	4 x 70 - 120	6 - 50
AkR 09			4 x 70 - 150	4 x 70 - 150	6 - 95
AkR 10			4 x 70 - 150	4 x 70 150	95 - 120 / 150se
AkR 11	4 x 35	4 x 35 - 70	4 x 50 - 95	4 x 35 - 70	6 - 50
AkR 12			4 x 120 - 150		6 - 50
AkR 13			4 x 120 - 150	4 x 95 - 120	16 - 120 / 150se



# Single Branch Clamps AzK



Type	Main Conductor				Tap Conductor			
	re	rm	se	sm	re	rm	se	sm
AzK 01			185 - 300	150 - 300			50 - 240	35 - 185
AzK 02			95 - 240	70 - 185	50 - 150	35 - 120	35 - 150	35 - 120
AzK 03			70 - 150	50 - 120	16 - 70	16 - 70	25 - 95	16 - 70
AzK 04	4 - 50	10 - 35			4 - 50	10 - 35		
AzK 05	25	25			25	25		
AzK 06	16	16			16	16		
AzK 07	10	10			10	10		

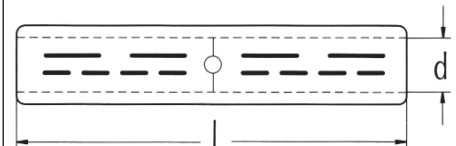


# Non-tension Compression Connectors PV



1 – 10 kV for hexagonal compression

Type	Conductor Cross Section mm <sup>2</sup>	Die Code No.	Dimensions in mm	
			d	L
PV 01	10 Cu	6	4,4	30
PV 02	16 Cu	8	5,5	50
PV 03	25 Cu	10	7,0	50
PV 04	35 Cu	12	8,2	50
PV 05	35 Alu	14	7,0	85
PV 06	150 Alu with sector shaped hole	25	-	90

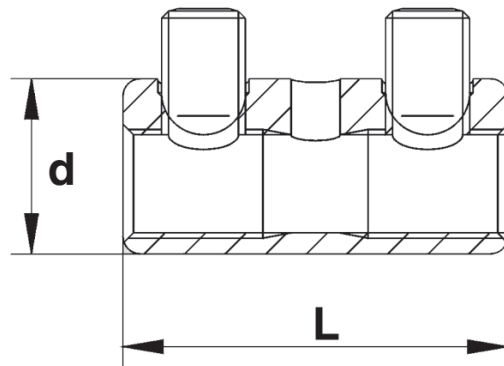
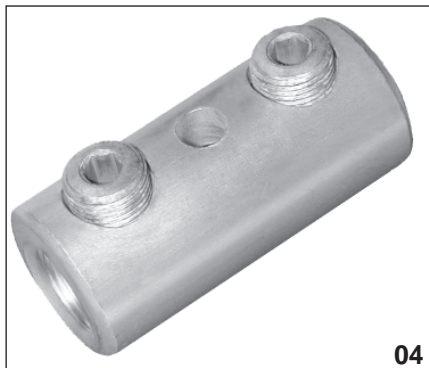


# Screw Connectors sv



1 – 10 kV

Type	Conductor Cross Section mm <sup>2</sup>	Material	Number of Screws	Dimensions in mm	
				d	L
SV 01	2,5 – 16 re	Cu	2	10	30
SV 02	6 – 25 rm / 35 re	Cu	2	14	40
SV 03	6 – 25 rm / 35 re	Al	2	14	40
SV 04	25 – 70 sm / 95 rm	Al	2	25	55
	16 – 50 re / 70 se				
SV 05	35 – 150 sm / 185 rm	Al	2	32	80
	35 – 50 re / 150 se				
SV 06	35 – 150 sm / 185 rm	Al with blind hole	2	32	80
	35 – 50 re / 150 se				



# Central Screw Connectors zsv

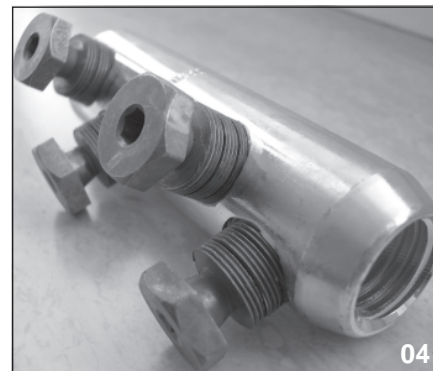
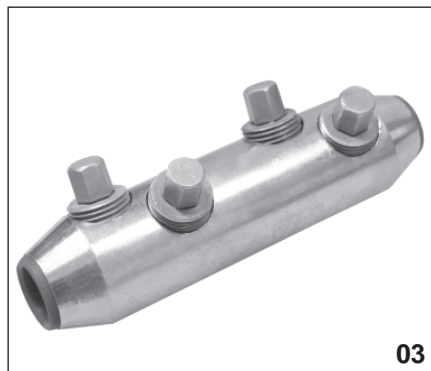


10 – 30 kV

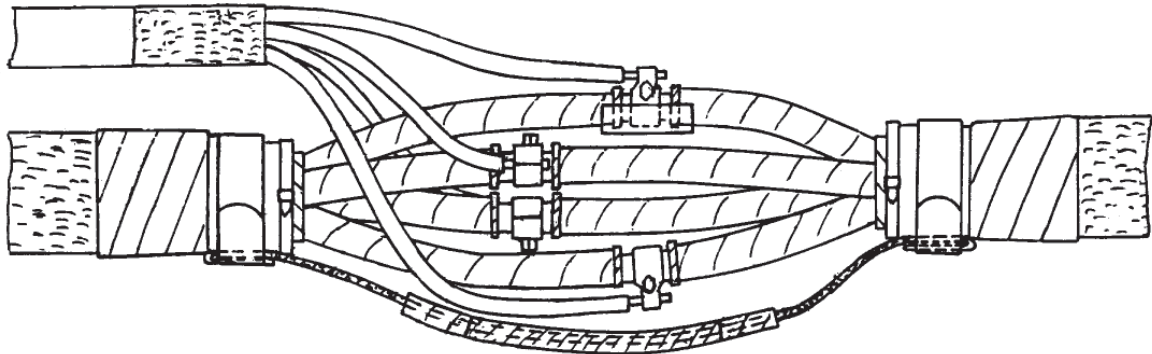
- aluminum with blind hole

- with shear screws

Type	Conductor Cross Section in mm <sup>2</sup>		Number of Screws	Dimensions in mm	
	Circular Conductor	Sectional Conductor		d	L
ZSV 01	25 re – 70 rm	50 se - 70 se	4	23	100
	95 rm (v)	70 sm / 95 se			
ZSV 02	70 re – 120 rm	70 se – 95 se / 95 sm	4	28	115
	150 rm (v)	120 sm (r) / 150 sm (r)			
ZSV 03	120 re – 185 rm	120 sm – 150 se	4	33	130
	240 rm(v)	150 sm / 185 sm (r)			
ZSV 04	95 – 240 rm (v)	120 – 185 sm	4	33	120
	95 – 240 re				
	Cu: 95 – 185 rm (v)				



# Earthing Sets ES



Type	Belted Cable with Lead Sheath	Dimensions of the Earthing Braid
earthing set ES 1	N(A)KBA 4 x 10 bis 4 x 50 mm <sup>2</sup>	16 mm <sup>2</sup>
earthing set ES 2	N(A)KBA 4 x 35 bis 4 x 70 mm <sup>2</sup>	16 mm <sup>2</sup>
earthing set ES 3	N(A)KBA 4 x 50 bis 4 x 150 mm <sup>2</sup>	16 mm <sup>2</sup>
earthing set ES 4	N(A)KBA 4 x 185 bis 4 x 240 mm <sup>2</sup>	35 mm <sup>2</sup>

## Handling

By few and simple steps a fast, operator-safe and solder-free re-establishment of the lead sheath connection is ensured.

The lead sheath will be connected by earthing braid and a rolled spring.

The self-amalgamating insulation tape is wrapped in two layers around the lead jacket and guarantees a save longitudinal water tightness.

## Application

The earthing sets are suitable for 4-core belted cable with lead sheath (N(A)KBA).

They are suitable for the use in the different cast resin joints.

## Specification

- flexible earthing braid
- roll springs
- self-amalgamating insulation tape
- binding wire
- cable ties
- Cleaning cloth
- abrasive tape
- processing instruction